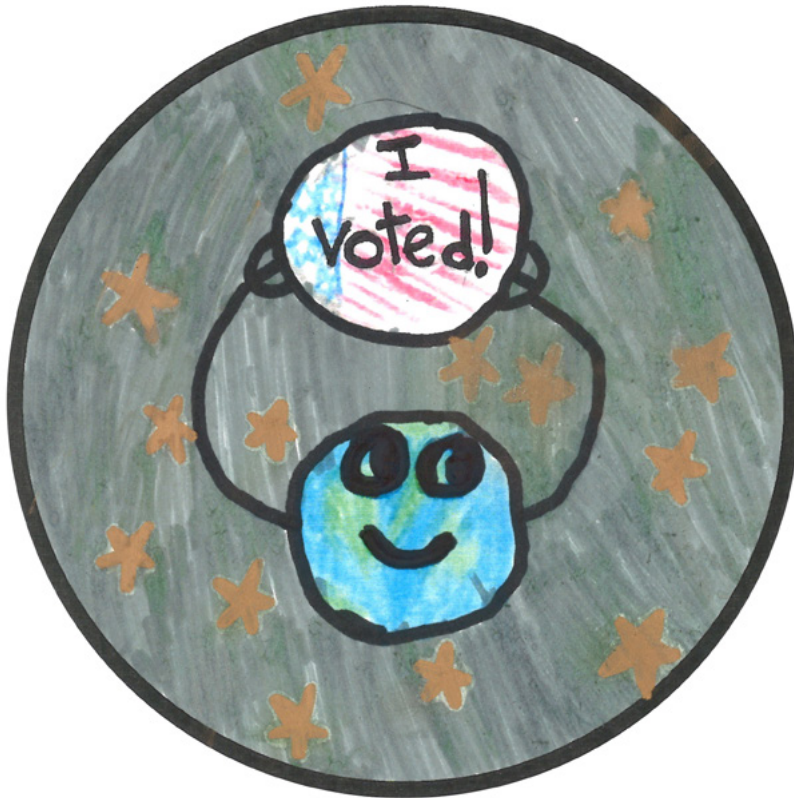


voters' pamphlet



Oregon Vote-by-Mail Primary Election | **May 21, 2024**



2024 ELEMENTARY SCHOOL (K-5) “I VOTED” STICKER CONTEST

Thank you to all of our local students who participated. To see all of this year's entries, visit www.deschutescounty.gov/artcontest

Congratulations to the Elementary School (K-5) “I Voted” Sticker Contest winner: **Ivy Sapp**, 2nd Grade, Lava Ridge Elementary School

View the full color version of Ivy's winning sticker design on our website.

Attention

This is the beginning of your Deschutes County Voters' Pamphlet. The County portion of this joint Voters' Pamphlet is inserted in the center of the State portion. Each page of the County Voters' Pamphlet is clearly marked with a color bar on the outside edge. All information contained in the county portion of this pamphlet has been assembled and printed by your County Clerk.



Dear Deschutes County Voter:

This is your May 21, 2024 Primary Election Voters' Pamphlet provided by your Deschutes County Clerk's Office. It contains information about candidates and measures from local jurisdictions within the boundaries of Deschutes County.

This pamphlet contains the ballot measures and explanatory statements designed to provide impartial information. It also contains paid arguments for or against certain measures. Candidates may also pay to place a statement in the pamphlet.

Ballots will be mailed on Wednesday, May 1, 2024, to each registered voter. Here are a few things you should know:

- ◆ **Mail** your voted ballot in your postage-paid return envelope or **drop it off** at an official drop site location by **8:00 pm, Tuesday, May 21, 2024**. Ballots that are mailed, postmarked by the United States Postal Service (USPS) by 8 pm on Election Day and received by the Clerk's Office by Tuesday, May 28, 2024 will be accepted. Remember to sign your ballot return envelope.
- ◆ Drop sites open Friday, May 3. Check the *Official Ballot Drop Sites* page in the pamphlet for more details.
- ◆ Candidate names on your ballot will appear in random alphabetical order. In accordance with ORS 254.155, random ordering of the letters is conducted prior to an election.
- ◆ Not all the candidates or measures in this Voters' Pamphlet will be on your ballot. Your residence address determines those districts for which you may vote. Your official ballot will contain only those issues on which you are eligible to vote, based on where you live.
- ◆ Not all candidates submit information for the Voters' Pamphlet, so you may have candidates on your ballot that are not in the Voters' Pamphlet.
- ◆ This Voters' Pamphlet is online at www.deschutescounty.gov/elections. After 8:00 pm on Election Night, preliminary election results will be posted online at www.deschutescounty.gov/ElectionResults.
- ◆ If a ballot was delivered to your residence for someone who should no longer be receiving a ballot at your address, please write "RETURN" on the envelope and place it back in your mailbox.
- ◆ The signature on each voter's ballot return envelope is verified against the voter's signature on file. The signatures must match before a ballot can be counted. If your signature has changed, please update your voter registration.

Translation Information

Selected portions of this county voters' pamphlet are available in Simplified Chinese, French, Korean, Russian, Spanish, Tagalog, and Vietnamese. These translations can be found online at oregonvotes.gov/DeschutesVP

本县选民手册的部分内容提供简体中文版本。可以访问 oregonvotes.gov/DeschutesVP 获取译本。

Des sections sélectionnées des brochures de l'électeur de ce comté sont disponibles en français. Ces traductions peuvent être consultées en ligne à l'adresse suivante : oregonvotes.gov/DeschutesVP

주 유권자 팜플렛의 선택된 부분은 한국어 준비되어 있습니다. 번역은 온라인 oregonvotes.gov/DeschutesVP 에서 찾아볼 수 있습니다.

Отдельные части брошюр избирателей этого округа доступны на русском языке. С данными переводами можно ознакомиться в Интернете по адресу: oregonvotes.gov/DeschutesVP

Algunas secciones de este folleto para votantes del condado están disponibles en español. Estas traducciones están disponibles en línea en oregonvotes.gov/DeschutesVP

Ang mga piling bahagi ng mga pamphlet na ito para sa mga botante ng county ay mababasa sa Tagalog. Makikita online ang mga pagsasaling-wikang ito sa oregonvotes.gov/DeschutesVP

Các phần được chọn trong tập thông tin cử tri quận này có bản ngôn ngữ tiếng Việt. Bản dịch có thể xem trực tuyến tại oregonvotes.gov/DeschutesVP

Index to Voters' Pamphlet

All candidates had the opportunity to submit a picture and statement regarding their candidacy in this pamphlet. The following candidates submitted information. The text of the candidate statements, measures and arguments were printed as submitted.

Election Information

	Page
Clerk's Letter	9-2
Translation Information	9-3
Voting Information.....	9-5
How To Cast Your Vote.....	9-6
Official Ballot Drop Sites.....	9-7
Directions to Your Newest Ballot Drop Sites.....	9-8
Primary Election Mechanics	9-9
Sticker Contest	9-24

Measures

	Page
9-164	9-10
9-165	9-11
9-166	9-13
9-167	9-15
9-168	9-18
9-169	9-19
9-170	9-20
7-87	9-21

Candidates

This Voters' Pamphlet does not contain candidate statements for County Precinct Committeepersons in accordance with ORS 251.335(2) & 248.015(7). For information on County Precinct Committeepersons, please contact your local county political party.

	Page
Chang, Phil.....	9-22
Huntamer, Brian.....	9-22
Imhoff, Robert Clark	9-23
Trego, Judy.....	9-23

Voting Information

Registering to Vote

To be eligible to vote in the May 21, 2024 Primary Election, a completed voter registration card must be postmarked by Tuesday, April 30, 2024.

Closed Primary System:

For the May 21, 2024 Primary Election, the Democratic and Republican parties have chosen to close their primaries to voters not affiliated with their parties. Only voters registered with the Democratic or Republican parties may vote for those parties' candidates for partisan offices. All other voters will receive a nonpartisan ballot.

To change your party affiliation, please update your voter registration by Tuesday, April 30, 2024.

To register to vote in Oregon, you must be:

1. A resident of Oregon.
 2. A United States citizen.
 3. At least 18 years old by Election Day.
-

You must update your registration if:

1. Your residence or mailing address changes.
2. Your name changes.
3. You wish to change your party affiliation.

Important Note: If you have moved or changed your name and you have not yet updated your registration, you are still eligible to vote. Call the Deschutes County Elections Office at (541) 388-6547 or email at elections@deschutescounty.gov for further information.

Contact:

Deschutes County Elections Office
(541) 388-6547 Deschutescounty.gov/elections
elections@deschutescounty.gov
1 (866) ORE-VOTES (se habla Español)
www.oregonvotes.gov
TTY 1 (800) 735-2900

Disclaimer:

Information provided in statements or arguments by a candidate, a political party, an assembly of electors, or a person supporting or opposing a measure have not been verified for accuracy by Deschutes County.

Voting Instructions

Your Ballot Packet will contain the following items:

- Printed ballot
 - Postage-paid return envelope to be signed
-

Examine your official ballot and vote it:

Examine your official ballot and locate the candidate or measure response oval of your choice for each contest. To vote, you must fill the oval (●) completely with a pen (black or blue ink) next to your choices. Do not use a felt tip pen.

Review your ballot:

Ensure you correctly marked your choice for each contest. Your official ballot may contain contests/measures printed on both sides of your ballot.

Prepare to return your ballot:

Place your ballot in the postage-paid return envelope. Election staff will ensure the secrecy of your ballot. Read the voter's statement on the return envelope and sign in the signature box.

Signing your ballot return envelope:

Your ballot will not be counted if the return envelope is not signed. Every signature is checked against the registration signature on file and the signature must match for the ballot to be counted.

Return your ballot:

- **By mail:** Return your ballot in your signed and sealed ballot return envelope. A stamp is not required. Mail your voted ballot no later than Tuesday, May 21, 2024. Ballots that are mailed, postmarked by the United States Postal Service (USPS) by 8 pm on Election Day and received by the Clerk's Office by Tuesday, May 28, 2024 will be accepted.
 - **At any official drop site:** Deliver the signed and sealed ballot return envelope to an official drop site no later than 8 pm on Election Day. Postage is not required.
-

Voters with disabilities:

If you need assistance with voting or casting your ballot, call the Deschutes County Elections Office at (541) 388-6547. We will provide two staff to assist you in voting. You may also authorize a friend, family member, or other trusted person, who are not affiliated with your employer or union, to assist you.

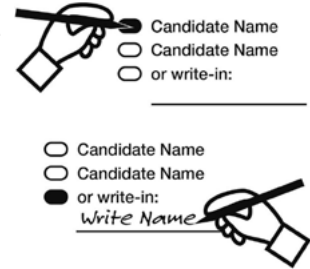
An audio edition of the Voters' Pamphlet is available for download on our website. Voters may also order by contacting Independent Living Resources at (503) 232-7411, info@irl.org, or TTY (503) 232-8408.

Remember, review both sides of your ballot. Some ballots may have contests/measures on both sides.

How To Cast Your Vote

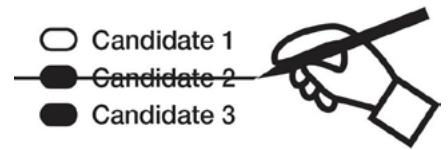
1 Complete your ballot

- To vote, completely fill in the oval next to your choice with a pen (black or blue ink). Do not use a felt tip pen.
- To vote for a person not on the ballot, fill in the oval next to the “write-in” line, then neatly write the name of the person on the line provided. Do not write a candidate’s name that already appears on the ballot.
- You do not have to vote on all contests. Those you do vote on will still count.



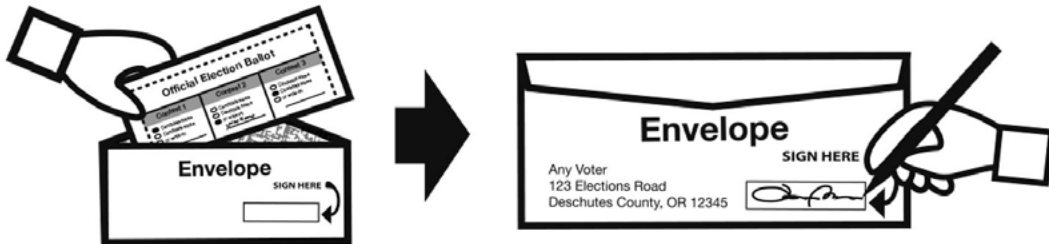
2 Check for errors

- If you vote for more options than are allowed, your vote **will not count** for that contest.
- If you make a mistake on your ballot, you may make your changes on the ballot. Draw a line through the entire candidate name or measure response. You then have the option of making another choice.
- Contact Deschutes County Elections Office at (541) 388-6547 to request a replacement ballot if:
 - you make a mistake that you cannot correct
 - your ballot is damaged or spoiled
 - your ballot is lost



3 Insert ballot & sign your return envelope

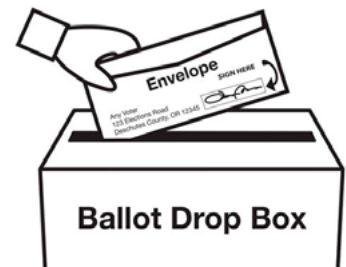
- Insert only your voted ballot (not another person’s ballot) inside your ballot return envelope. *(If we receive an envelope with more than one ballot inside, all enclosed ballots will be rejected and not counted).*
- You must sign your ballot return envelope or **your vote will not count.**



- The signature on each voter’s ballot return envelope is verified against the voter’s signature on file. The signatures must match before a ballot can be counted. If your signature has changed, please update your voter registration.

4 Return your ballot

- By mail:** Return your ballot in your signed and sealed ballot return envelope. Postage is not required. Mail your voted ballot no later than Tuesday, May 21, 2024. Ballots that are mailed, postmarked by the United States Postal Service (USPS) by 8 pm on Election Day and received by the Clerk’s Office by Tuesday, May 28, 2024 will be accepted.
- At any official drop site:** Deliver the signed and sealed ballot return envelope to an official drop site no later than 8 pm on Election Day. Postage is not required.



**Deschutes County May 21, 2024 Primary Election
Official Ballot Drop Sites**

Don't Delay, Vote Today!

Drop off your ballot at an official drop site location by **8 pm, Tuesday, May 21, 2024**.
Remember to sign your ballot return envelope.

Drop Site Hours:

Open: Friday, May 3, 2024
Close: Election Day, Tuesday, May 21, 2024 at **8 pm**

Drop Site Locations:

Bend				
Deschutes Services Center 1300 NW Wall St, Bend <i>(Walk-up & Drive-through exterior Drop Boxes located on west side of building)</i>	Deschutes County Road Department 61150 SE 27 th St, Bend <i>(Box located on south end of parking lot)</i>	Old Mill 459 SW Bluff Dr, Bend <i>(Box located on the knoll above Old Mill District in parking lot south of Hilton Garden Inn hotel)</i>	Bradbury Park & Ride 1000 SW Bradbury Way, Bend <i>(Box located across from the Park & Rec Pavilion off of Simpson & Columbia)</i>	Pine Nursery Park 3750 NE Purcell Blvd, Bend Open usual park business hours <i>(Box located at east end of parking lot)</i>
Redmond		La Pine	Sisters	Sunriver (Temporarily Closed) Sunriver Public Library 56855 Venture Ln, Sunriver <i>(temporarily closed due to construction)</i> Voters encouraged to mail or use alternative Drop Site Locations.
Deschutes County Expo Center (Fairgrounds) 3800 SW Airport Way, Redmond <i>(Box located on roundabout in east end of parking lot)</i>	Parking Lot across from Centennial Park (Temporarily moved from the Redmond Library) 716 SW Evergreen, Redmond <i>(Box located at north end of parking lot)</i>	La Pine Public Library (Open during construction) 16425 1st St, La Pine <i>(Box located at 1st St & Huntington Rd)</i>	Sisters City Hall 520 E Cascade Ave, Sisters <i>(Box located in front of City Hall)</i>	

– OR –

Mail your voted ballot in your postage-paid return envelope by **8 pm, Tuesday, May 21, 2024**. Ballots that are mailed, postmarked by the United States Postal Service (USPS) by 8 pm on Election Day and received by the Clerk's Office by May 28 will be accepted. Remember to sign your ballot return envelope.

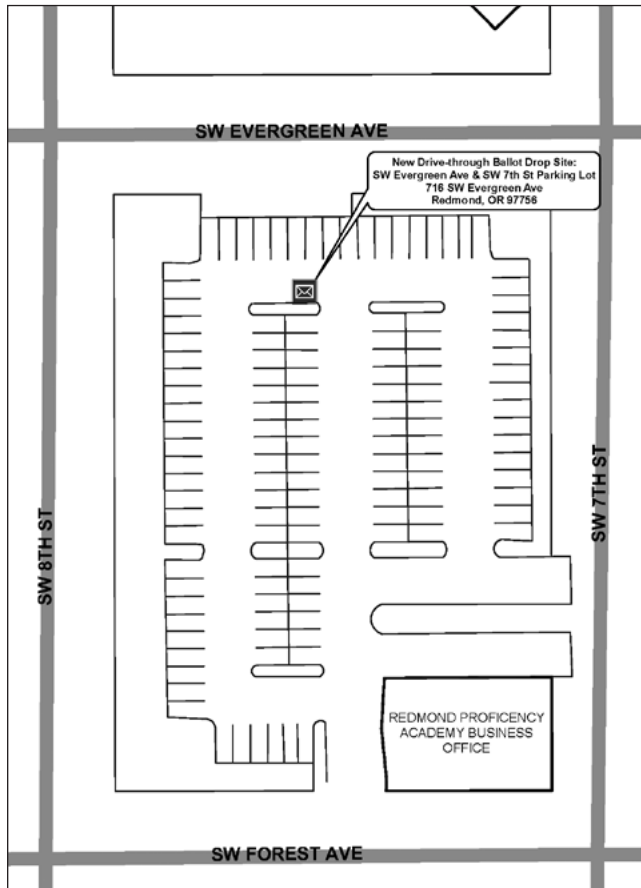
County Clerk's Office, 1300 NW Wall St, Suite 202 (2nd Floor), Bend
Monday through Friday, 8 am to 5 pm | Election Day, 7 am to 8 pm
 – Voting Booths Available –

Directions to Your Newest Ballot Drop Sites

Watch for signs and banners to direct you to these drop sites.

Redmond Library Ballot Drop Box Has Temporarily Moved to the Parking Lot at SW Evergreen Ave & SW 7th St, Redmond

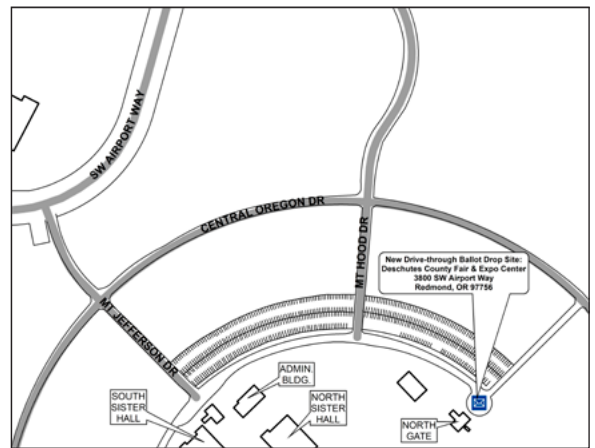
The Redmond Library is under construction until the expected completion date of December 2024. Signage will be posted directing voters to enter the parking lot via SW 7th St and exit on SW Forest Ave.



Deschutes County Expo Center (Fairgrounds)

3800 SW Airport Way, Redmond

Drive-through box is located on the roundabout in the east end parking lot.



.... Reminders

Your Ballot Packet

Your ballot packet will contain a ballot and a postage-paid return envelope.

Signing Your Ballot Return Envelope

Remember to sign your ballot return envelope.

The signature on each voter's ballot return envelope is verified against the voter's signature on file. The signature must match before a ballot can be counted. If your signature has changed, please update your voter registration.

Returning Your Ballot

No stamp required.

Mail by Election Day, Tuesday, May 21, 2024.

Ballots that are mailed, postmarked by the United States Postal Service (USPS) by 8 pm on Election Day and received by the Clerk's Office by Tuesday, May 28, 2024 will be accepted.

Primary Elections in Oregon

How They Work & What They Mean for Voters

What is a Primary Election?

Primary elections are partisan elections that *major* political parties use to nominate candidates to run for partisan office in general elections. *Minor* political parties nominate candidates to run for partisan office in the general election according to party rule, and those candidates do not appear on the primary election ballot. Winning candidates of a general election are elected into office. Partisan offices include U.S. President, U.S. Senator, U.S. Representative, Governor, Secretary of State, State Treasurer, Attorney General, State Senator, and State Representative.

At general elections, voters will receive a ballot containing both partisan and nonpartisan offices and can vote for any candidate even if they are not of the same party. Most statewide ballot measures are on the general election ballot.

How are Primaries Conducted in Oregon?

Closed vs Open Primaries

A *closed* primary requires a voter to be registered with a political party in order to vote for that party's candidate; the election for the partisan candidate is closed to nonaffiliated voters as well as minor party affiliated voters. An *open* primary is an election that does not require voters to be affiliated with a political party to vote for partisan candidates.

Primary Elections in Oregon

Oregon's primary is closed, meaning only registered voters of a major political party can vote for candidates of the same party. At the primary election, voters who are not registered in one of the major political parties will receive a ballot containing nonpartisan contests, such as judicial elections, which all registered voters may vote on. Major political parties (the Democratic and Republican parties) have the option of opening up their primary elections to allow voters not affiliated with any political party to vote in the party's primary. If the parties choose not to open up their primaries, only voters registered with the Democratic or Republican parties may vote for those parties' candidates for partisan offices.

Primary Elections in Deschutes County

Every office in Deschutes County is nonpartisan. The majority of county offices are elected in general elections unless there are three or more candidates by the filing deadline for the primary election. These candidates would then be on the primary ballot, with the top two vote-getters facing off in the general election.

The County Assessor, County Commissioners, and Justice of the Peace are elected differently than other county offices; they are elected in primary elections. If no candidate receives a majority of votes (50% + 1 vote) for the office, the two candidates who receive the highest number of votes in the Primary are nominated and move to the General Election.

Closed Primary System

For the May 21, 2024 Primary Election, the Democratic and Republican parties have chosen to close their primaries to voters not affiliated with their parties. Only voters registered with the Democratic or Republican parties may vote for those parties' candidates for partisan offices. All other voters will receive a nonpartisan ballot. To change your party affiliation, please update your voter registration by Tuesday, April 30, 2024.

Ballot Title

9-164

Five Year Local Option Tax Renewal for District Dust Abatement

QUESTION: Shall District impose \$0.60 per \$1000 of assessed property value for dust abatement for 5 years beginning in 2025. This measure renews current local option taxes.

SUMMARY: Newberry Estates Special Road District "District" covers road repairs, snow removal, grading, weed control and fire break/vehicle safety corridor for all roads within the District from its general fund.

The District has a separate local option tax levy for annual Dust Abatement Application that will expire at the end of this year. To continue this service the District is proposing a levy of \$0.60 per \$1000, or \$60 per \$100,000 of assessed property value for a five year period beginning in 2025.

The current annual cost to apply dust abatement materials is approximately \$25,000. Our current levy generates approximately \$13,000 annually leaving a large gap that must be paid from the District's general fund.

This measure is estimated to generate approximately \$19,500 in 2024-2025, \$20,085 in 2025-2026, \$20,688 in 2026-2027, \$21,308 in 2027-2028 and \$21,947 in 2028-2029 for an estimated total of \$103,528 over five years. This will allow for continuation of the successful dust abatement program in the spring of each year.

Explanatory Statement

Newberry Estates Special Road District "District" covers road repairs, snow removal, grading, weed control and fire break/vehicle safety corridor for all roads within the District from its general fund.

The District has a separate local option tax levy for annual Dust Abatement Application that will expire at the end of this year. To continue this service the District is proposing a levy of \$0.60 per \$1000, or \$60 per \$100,000 of assessed property value for a five year period beginning in 2025.

The current annual cost to apply dust abatement materials is approximately \$25,000 per treatment. Our current dust abatement levy generates approximately \$13,000 annually leaving a large gap that must be paid from the District's general fund.

This measure is estimated to generate approximately \$19,500 in 2024-2025, \$20,085 in 2025-2026, \$20,688 in 2026-2027, \$21,308 in 2027-2028 and \$21,947 in 2028-2029 for an estimated total of \$103,528 over five years. This will allow for continuation of the successful dust abatement program in the spring of each year.

(This information furnished by Mark Dietz, Newberry Estates Special Road District.)

Measure 9-165 La Pine Rural Fire Protection District

Ballot Title

9-165

Renewal of 5 year Operations Levy for the Fire District

QUESTION: Shall District renew 5-yr. local option levy of \$0.64/\$1,000 assessed value for operating purposes beginning 2024-2025?

This measure renews current local option taxes.

SUMMARY: This measure renews the current tax rate for La Pine Rural Fire Protection District for five years and provides continuing funds for operating costs that:

- Maintain 2 Advanced Life Support ambulances in service-24/7
- Maintain one Duty Officer in the District at all times to ensure effective emergency response.
- Maintain operations of all District fire stations- Huntington, Burgess/Day and South Century Drive.
- Maintain volunteer and student programs to support operations.
- Maintain the 2012 ISO insurance rating lowering insurance costs.
- Allow continued grant matching funds for equipment, apparatus, facilities, programs, and personnel.
- Maintain 21 career Firefighter/Paramedics and provides for training.
- Provide funding to maintain EMS equipment for medical services and transportation.

The local option levy is for five years, renewing July 2024. The tax rate remains at \$0.64/\$1000 assessed valuation. Estimated revenues over 5 years:

2024-2025: \$1,421,088; 2025-2026: \$1,463,721; 2026-2027: \$1,507,633; 2027-2028: \$1,552,862; 2028-2029: \$1,599,448; Total estimated tax to be raised by measure: \$7,544,752.

- Maintain support of our volunteer, reserve and support services program.
- Provide continued grant matching funds for equipment, apparatus, facilities, programs, and personnel decreasing overall financial burden to tax payer.
- Maintain 21 career Firefighter/Paramedics.
- Maintain technology and software that supports emergency response services.

The La Pine Rural Fire Protection District has highly trained and professional career firefighters along with a residential full-immersion student firefighter program and a volunteer support services group providing essential emergency services to the community. The District is known for efficient and effective use of taxpayer funds, maximizing the cost of recovery and grant opportunities by use of best management practices, ongoing strategic planning processes, ten-year budget planning, and analysis of key statistical performance indicators. The District analyzes expense and revenue structures constantly to improve value of services to its patrons. It maintains the community's equipment and facilities without debt. The District's five elected Directors have significant experience in public governance, current business practices, healthcare, and community risk reduction. The Directors set the District's service goals, community risk, and provide oversight of Fire and EMS operations through policy. The District has an annual external audit of its finances and financial procedures which is open for public review.

(This information furnished by Erick Holsey, La Pine Rural Fire Protection District.)

Explanatory Statement

This measure maintains the current Fire District tax rate as well as the current levels of fire and emergency medical services. This local option operating levy has been in effect since 1998 and was last renewed in 2014 by the voters of the Fire District. In June 2024, the levy expires and the District is asking voters to renew the local option levy at the same rate, again for five years, starting in July 2024. The tax rate will remain the same at \$0.64/\$1000 of assessed valuation. A home valued at \$200,000 would continue to pay \$128.00 per year (\$10.66/month).

Renewal of this levy allows the District to maintain current personnel and continue providing for the emergency service needs of our constituents and future needs for our citizens.

- Emergency Alarms and demand for service have continually increased over the past 10 years.
- Emergency Medical Services account for 84% of alarm volume with ambulance transports to Bend lasting approximately 2 hours.
- Continuous threat of wildfire and explosive building growth challenge service delivery.

This levy, along with other taxes, fees, and levies will provide essential funding that:

- Maintain ambulance services that provide for our citizens and meet system demands.
- Maintain emergency medical service supplies and equipment that meet industry standards for treatment and transportation.
- Maintain operations of District Fire stations to maintain ISO ratings and provide reductions in insurance costs and property loss.

Measure 9-165 Arguments

Argument in Favor

The La Pine Professional Firefighters Association Local #3387 strongly endorses Measure 9-165, a pivotal step in maintaining the exemplary service standards we currently uphold. Thanks to the overwhelming support for Measure 9-157 last year, we've witnessed significant progress, notably a reduction in instances where ambulances were unavailable due to simultaneous calls or patient transports to Bend. The renewal of this levy is not just about maintaining the status quo; it's about building on these gains to decrease emergency response times further.

Timely responses are critical in emergencies, especially for individuals experiencing heart attacks, strokes, or severe injuries—every second counts. The enhancements we've made have allowed our teams to provide life-saving treatments more swiftly, reducing the need to rely on neighboring districts' resources. This capability is equally crucial in fire emergencies, where rapid intervention can mean the difference between a minor incident and a catastrophic loss.

Failing to renew this levy would not diminish our commitment to service, but the strides we've made in improving response times may be reversed without it. We invite you to stand with the La Pine Professional Firefighters in supporting the Operations Levy. Your vote sustains our mission and ensures we can continue to provide the fastest, most effective response when it matters most. Let's preserve and enhance the safety and well-being of our community together.

(This information furnished by Justin Melling, La Pine Professional Firefighters IAFF Local #3387.)

The printing of this argument does not constitute an endorsement by the County of Deschutes, nor does the county warrant the accuracy or truth of any statement made in the argument.

Measure 9-166 La Pine Rural Fire Protection District

Ballot Title

9-166

Renewal of 10 year Capital Levy for the Fire District

QUESTION: Shall District renew 10-yr. capital replacement levy of \$0.23/\$1,000 assessed value for capital projects beginning 2024-2025?

This measure renews current local option taxes.

SUMMARY: This measure renews La Pine Rural Fire Protection District's expiring bond levy with a tax rate of \$0.23/\$1000 assessed valuation to provide for capital funds for:

- Replacement schedule of ambulances.
- Replacement schedule of fire apparatus.
- Replacement schedule of command and staff vehicles.
- Replacement schedule of breathing apparatus and air cylinders.
- Replacement schedule of personal protective equipment.
- Addition of standardized fire and Emergency Medical equipment.
- Addition, upgrade, and maintenance of technology and service contracts to ensure protection of health information.
- Facility maintenance and upgrades to support community response needs.

The capital local option levy is for ten years starting in July 2024. The tax rate remains at the current rate of the District's capital levy expiring June 2024. Estimated over 10 years is:

2024-2025: \$488,472; 2025-2026: \$503,126;

2026-2027: \$518,220;

2027-2028: \$533,766; 2028-2029: \$549,779;

2029-2030: \$566,273;

2030-2031: \$583,261; 2031-2032: \$600,759;

2032-2033: \$618,782; 2033-2034: \$637,345;

The total estimated tax cost \$5,599,783.

- Replacement of fire apparatus with service life of over 25 years or have undergone catastrophic failure.
- Replacement of command and staff vehicles that exceed 250,000 miles or 15 years of service.
- Replacement of self-contained breathing apparatus and air cylinders that have 15 years of service life.
- Replacement of structural and wildland protective clothing and equipment with a 10-year service life.
- Addition of standardized fire and EMS equipment.
- Addition, upgrade, and maintenance of technology and service contracts to ensure cyber security and protection of health information.
- Facility maintenance and upgrades to support current and growing operational staff to support response needs.

The La Pine Rural Fire Protection District has highly trained and professional career firefighters, residential student firefighter program, and a volunteer support services group providing essential emergency services to the community. The District is known for efficient and effective use of taxpayer funds, maximizing cost recovery and grant opportunities by use of best management practices, ongoing strategic planning, budget planning, and analysis of key statistical performance indicators. The District analyzes expense and revenue structures to improve value of services to its patrons. It maintains the community's equipment and facilities without debt. The District's five elected Directors have significant experience in public governance, current business practices, healthcare, and community risk reduction. The Directors set the District's service goals, community risk, and provide oversight of District operations through policy. The District has an annual external audit of its finances and financial procedures which is open for public review.

(This information furnished by Erick Holsey, La Pine Rural Fire Protection District.)

Explanatory Statement

This measure keeps the current overall Fire District tax rates the same as well as sustains the current level of fire and emergency medical services. It renews the expiring 10-year capital option levy with a tax rate of \$0.23/\$1,000 of assessed valuation starting in July 2024. Every ten years since 1974 District voters have approved capital bonds or levies for the purpose of facility, apparatus and equipment acquisition and replacement. The advantage of a local option levy is that tax payers do not pay for the cost of issuing a new bond and there is no interest payment on the levy. By maintaining the funding of the capital operating levy, the District will continue to remain debt free for capital by following the capital replacement program to maintain service levels.

The District has \$8.1 million in capital assets and a long-range plan to replace facilities, apparatus, ambulances, equipment and technology in a responsible and efficient manner consistent with Industry and workplace best practices. If renewed, the tax rate would remain the same at \$0.23/\$1,000 of assessed valuation. A home valued at \$200,000 would continue to pay \$46 per year (\$3.83/month). Estimated tax revenues to be received in ten years:

2024-2025: \$488,472	2025-2026: \$503,126
2026-2027: \$518,220	2027-2028: \$533,766
2028-2029: \$549,779	2029-2030: \$566,273
2030-2031: \$583,261	2031-2032: \$600,759
2032-2033: \$618,782	2033-2034: \$637,345

The local option levy would fund over 10 years:

- Replacement of ambulances that exceed 250,000 miles or 7 years of service

Measure 9-166 Arguments

Argument in Favor

The La Pine Professional Firefighters Association Local #3387 strongly endorses Measure 9-166. This measure enables the district to have a long-term stable and predictable budget for the maintenance and replacement of our apparatus and facilities. There are several compelling reasons this measure is essential to our operations.

- 1. Protecting Our Firefighter/Paramedics:** Measure 9-166 ensures the district can provide safe facilities and reliable apparatus for the employees and citizens we serve. A healthy workforce is necessary for an organization of our size. Even a single employee out due to an on-the-job injury significantly impacts our operational capacity. By ensuring that we have a well-equipped and healthy workforce, it empowers our team to deliver the highest level of service possible.
- 2. Recruitment and retention:** Recruitment and retention pose significant challenges not only for our district but for fire service agencies across the region. Investing in the district's infrastructure and resources demonstrates a commitment to the well-being of our Firefighters/Paramedics. This commitment is essential for attracting recruits and retaining our experienced employees. A well-funded fire district with modern facilities and equipment is more attractive to prospective employees, this leads to a more resilient and competent workforce.
- 3. Enhancing emergency response:** A 10-year Capital Levy allows the district to invest in infrastructure and state-of-the-art equipment. This includes acquiring more capable technology for medical response, as well as state-of-the-art firefighting equipment. Given the limited staffing of our district, we rely heavily on our technology to streamline operations, allowing us to allocate resources more efficiently and focus on the most critical tasks.

In summary, Measure 9-166 is indispensable for safeguarding the well-being of our firefighters, enhancing recruitment and retention efforts, and bolstering our emergency response capabilities. By supporting this measure, we ensure that our district remains prepared to deliver prompt, effective, and lifesaving services to our community.

(This information furnished by Justin Melling, La Pine Professional Firefighters IAFF Local #3387.)

The printing of this argument does not constitute an endorsement by the County of Deschutes, nor does the county warrant the accuracy or truth of any statement made in the argument.

Measure 9-167 Administrative School District No. 1

Ballot Title

9-167

5-Year Local Option Levy to Improve, Support Student Learning

QUESTION: Shall District levy \$1.00 per \$1,000 assessed value for five years beginning 2024-25 to bridge funding gap, support priorities? This measure may cause property taxes to increase more than three percent.

SUMMARY: Passage of the levy would help Bend-La Pine Schools prepare students for lifelong learning and career success. The District serves over 17,000 students.

The District is unable to fully fund student focused programs and services with revenues received under the state funding model. This proposed 5-year local option levy would allow the District to bridge the funding gap and dedicate resources for the following:

- Strengthening and adding Career Technical Education pathways
- Protecting and maintaining class sizes
- Recruiting and retaining teachers and support staff
- Increasing advanced academic offerings for students
- Improving support systems for struggling students
- Enhancing elective offerings in music, art, technology, business, world languages

The levy would establish a tax rate of \$1.00 per \$1,000 of assessed property value. The estimated cost for a home with a median assessed value of \$238,750 is \$239 a year.

The levy would raise an estimated:

\$21,200,000 in 2024-25
\$21,836,000 in 2025-26
\$22,491,000 in 2026-27
\$23,165,000 in 2027-28
\$23,860,000 in 2028-29

The total raised over 5 years is estimated at \$112,552,000.

Explanatory Statement

The proposed Learning Levy will pay for programs and services that are unfunded or underfunded by the state. This would enable the school district to fund unmet needs in Bend, Sunriver and La Pine.

Career Technical Education

Interest in Career Technical Education is surging, with 34 CTE programs across our seven high schools. Students can obtain the knowledge and skills they need to thrive in high-wage, high-demand careers.

The levy will open CTE to more students as we introduce new courses and modernize existing programs with updated tools and technology to meet industry standards. By aligning with the needs of our job market, we can ensure graduates are ready to succeed and contribute to our economic growth.

Optimal class sizes

When classes are the optimal size, teachers can form strong relationships with students and better provide individual attention and support. Crowded classrooms diminish learning.

Our goal is to keep average class sizes between 22 students (kindergarten) and 29 students (high school). This levy will allow the district to add educators to meet the needs of our school communities.

Recruitment and retention

School employees should be able to live and thrive in the communities where they work. At Bend-La Pine Schools, we aspire to be an employer of choice, attracting and keeping great educators and support staff.

The levy also will improve staff support and career growth opportunities through professional learning, coaching and mentoring. Having a strong workforce is imperative in helping students succeed in the classroom and beyond.

Advanced academic offerings

Students who pursue honors and college-level courses develop skills and habits needed for success in college and careers. Stronger communication and problem-solving skills are among the benefits of accelerated learning opportunities.

The levy will enable the district to strengthen and expand its Advanced Placement, International Baccalaureate and college dual credit programs. It will help remove barriers for students to access advanced courses and help teachers qualify to teach these courses.

Student support

Our ability to support students, including those facing barriers to learning, is strained under our existing funding level.

The levy will allow the District to invest in our counseling and student success staff, campus monitors, academic tutoring and the development of literacy skills. It will strengthen efforts to promote belonging and dignity among students, helping to reduce bullying and aggressive behavior.

Elective offerings

Electives such as music, art, world languages and business help students discover their passion and purpose. Taking electives inspires and challenges students through graduation.

The levy will let us address gaps in elective offerings, increase opportunities for middle school students and enhance world languages at the secondary level.

Levy rate

The proposed rate is \$1 per \$1,000 of assessed property value. A homeowner will pay an estimated \$20 a month, based on the median assessed value of residential properties in the district. Assessed value can be found below Real Market Value on the property tax statement.

(This information furnished by Steven Cook, Superintendent, Bend-La Pine School District.)

Measure 9-167 Arguments

Argument in Favor

Bend Education Association, which represents the 1,100 certified staff of Bend-La Pine Schools, **stands in strong support** of the proposed 5-year local learning levy on the upcoming ballot. The current state funding model falls short in adequately supporting the diverse needs of our student population. Without additional funding, essential programs and services cannot be expanded to meet the needs of the students and families we serve. This levy offers a solution to this pressing issue by providing dedicated resources for essentials that our public education system needs and demands.

By passing this levy, we can safeguard **class sizes**, which are essential for effective teaching and learning. Additionally, we can strengthen **career and technical education (CTE) pathways**, ensuring that students are equipped with the skills necessary for success in the workforce.

One of the most critical aspects of this levy is its impact on our educators. By allocating resources to **recruit and retain teachers and support staff**, we can maintain a deeply talented workforce dedicated to our students' growth and development.

Furthermore, passage of the levy will **enhance academic opportunities** for students across content areas, from advanced academic offerings to elective courses in music, art, technology, business, and world languages. This comprehensive approach to education ensures that every student has access to well-rounded experience that prepares them for future success.

The minimal increase in property taxes associated with this levy is a small price to pay for the significant benefits it will bring to our community and schools.

We urge voters to join us in supporting the Bend-La Pine Schools Local Option Levy on May 21, 2024. Together, we can invest in the future of our students and ensure that Bend-La Pine Schools remain a great place to learn and grow.

Sarah Barclay, NBCT
President Bend Education Association

(This information furnished by Sarah Barclay, Bend Education Association.)

Argument in Favor

Bend-La Pine Board Members: Local Learning Levy Essential to Student Success

As your elected School Board Members, we see firsthand how public education is directly related to our economy, our neighborhoods, and our quality of life. Ensuring our schools are prepared for every student to succeed and that there are enough high-quality educators to avoid overcrowding is a top priority for our district.

However, the funding we receive from the Oregon Legislature will no longer fully fund the educational programs that are necessary for our students. This Local Learning Levy is crucial to ensure that each of the 17,000 students in Bend, Sunriver and La Pine have access to a rigorous and relevant k-12 education.

Voting YES on Measure 9-167 secures funding that will impact all 33 schools in our school district. This revenue stays in our school district and an independent citizen oversight will ensure that these funds are used only for purposes approved by local voters.

Local funding will enhance options for students through Career and Technical education, advanced level courses, expanded elective options, and additional support for struggling students. It will also allow us to protect class sizes and provide additional support for students such as counselors, campus monitors, and other resources that make schools welcoming and safe for all students.

We believe academic opportunities and additional support for students will be an essential factor to their success and will provide students with a solid foundation for wherever life takes them after high school. After all, today's students are tomorrow's co-workers, neighbors, and fellow taxpayers.

We strongly urge you to vote YES for schools, YES for the students and educators of the Bend-La Pine School District, and YES for our community. Your support is essential to the future of Bend.

Respectfully submitted by the Bend-La Pine Schools Board:

Melissa Barnes Dholakia, Chair
Marcus LaGrand, Vice Chair
Kina Chadwick
Cameron Fischer
Carrie McPherson Douglass
Shirley Olson
Amy Tatom

(This information furnished by Melissa Barnes Dholakia, Central Oregonians for Responsible Education.)

The printing of this argument does not constitute an endorsement by the County of Deschutes, nor does the county warrant the accuracy or truth of any statement made in the argument.

The printing of this argument does not constitute an endorsement by the County of Deschutes, nor does the county warrant the accuracy or truth of any statement made in the argument.

Measure 9-167 Arguments

Argument in Favor

Support the Learning Levy for Bend-La Pine Schools

Quality education is a cornerstone of a great community, and supports healthy families, a thriving workforce, and our local economy. The Learning Levy for Bend-La Pine Schools is an investment in education as well as the future of our community and all who call it home.

As leaders in our community, we urge you to vote yes on Measure 9-167. All of us investing together in our schools will make a monumental difference in the educational opportunities and support services we provide to over 17,000 students in our schools.

Our school district strives to ensure that every student in every school succeeds and reaches their highest potential in life, supporting each student's chosen educational and career path. As parents, grandparents, business owners, civic leaders and retirees, we all have a chance to make a real difference in the lives of our children. The Learning Levy will support robust and relevant Career Technical Education courses, arts and music education, and advanced offerings such as dual credit college-level courses and Advanced Placement. The levy also will help the school district attract and retain high-quality educators and support staff, the heart of effective schools.

When a community steps up to provide local levy support for their schools, students succeed, families, workers and businesses thrive, and educators and other school staff get the support they need. And our community wins.

Please vote yes on the Learning Levy – Measure 9-167. Let's ensure our community has a school system we can all be proud of, and which ensures a prosperous future for our city.

Bend City Council:

Melanie Kebler, Mayor
Megan Perkins, Mayor Pro Tem
Anthony Broadman, Councilor
Barb Campbell, Councilor
Ariel Méndez, Councilor
Megan Norris, Councilor
Mike Riley, Councilor

(This information furnished by Melissa Barnes Dholakia, Central Oregonians for Responsible Education.)

Argument in Favor

An Opportunity to Invest in Educators and Support Staff

Passage of Measure 9-167 would give Bend-La Pine Schools a much-needed boost in its efforts to recruit and retain quality teachers and support staff. Investing in our school employees not only enriches the educational experience of our children but also bolsters the well-being of our entire community.

We have seen what inadequate funding does to a school district, especially in a place where competing wages and higher costs lure great educators away from classrooms. It's essential that Bend-La Pine Schools is able to attract highly qualified educators and skilled, experienced support staff. It's heart-breaking every time we lose a caring and dedicated school staff member to another employer.

Competitive salaries and benefits are crucial in drawing talented individuals to our district, ensuring that our students receive great instruction and support. Without sufficient resources, the district risks a shortage of skilled professionals in our classrooms.

Retaining skilled employees requires more than just competitive compensation; it demands a supportive work environment and opportunities for growth. The Learning Levy ensures that resources go toward professional development programs, mentorship initiatives, and innovative teaching tools, fostering a culture of continuous improvement and job satisfaction among staff members.

These are compelling reasons to VOTE YES for the Learning Levy. By providing the necessary resources to recruit, retain and support educators and school staff, we can lay the foundation for a vibrant community where every child has the opportunity to succeed. Let's prioritize our children's education by investing in the professionals there to teach, coach, mentor, protect and support them every day.

Ron Wilkinson, Former Superintendent, Bend-La Pine Schools
Shay Mikalson, Former Superintendent
John Rexford, Former Deputy Superintendent, Bend-La Pine Schools
Julie Craig, Former Board Member
Shimiko Montgomery, Director, Oregon State Board of Education
Paul Andrews, Superintendent, High Desert Education Service District
Michele Emery, Past President, Education Foundation for Bend-La Pine Schools
Stand for Children

(This information furnished by Mary Anne Paulson, Central Oregonians for Responsible Education (CORE.))

The printing of this argument does not constitute an endorsement by the County of Deschutes, nor does the county warrant the accuracy or truth of any statement made in the argument.

The printing of this argument does not constitute an endorsement by the County of Deschutes, nor does the county warrant the accuracy or truth of any statement made in the argument.

Measure 9-168 City of Redmond

Ballot Title

9-168

Amending Redmond City Charter for qualifications to hold elective office.

QUESTION: Shall the City amend the Charter to prohibit first degree consanguinity or affinity relatives from holding elective office together?

SUMMARY: If adopted, this measure would amend Redmond City Charter, Section 12, Qualification of Officers. The amendment would add a qualification that no person would be allowed to hold elective office on the same City Council with their spouse, domestic partner, parent, or child who is a current Mayor or City Councilor. First degree relatives by consanguinity are parent/child relationships. First degree relatives by affinity are spouse/domestic partner relationships. Complete copies of the proposed Charter amendment showing all changes are available from the City Recorder's office and at www.redmondoregon.gov.

Complete copies of the proposed charter amendment showing all changes are available from the City Recorder's office at 411 SW Ninth and at www.redmondoregon.gov.

(This information furnished by Keith Witcosky, City of Redmond.)

Explanatory Statement

The City of Redmond is proposing an amendment to the Redmond City Charter. The amendment would add a qualification that no person would be allowed to hold elective office on the same City Council with their spouse, domestic partner, parent, or child who is a current Mayor or City Councilor. The charter sets forth a government that is overseen by six City Councilors and one Mayor.

A charter serves as the foundational governance document of the City. It outlines the principles, structures, and processes of the City's government. Oregon law essentially allows city voters to organize their city government as the majority of voters consider best suited to meet the needs of the city. This proposed charter amendment would become operative January 1, 2025.

Currently, there are no limitations on holding elective office on the same City Council with a spouse, domestic partner, parent, or child who is a current Mayor or City Councilor. If passed, a person would not be allowed to hold elective office on the same City Council with their spouse, domestic partner, parent, or child who is a current Mayor or City Councilor.

This amendment would not affect any person currently serving on City Council.

This Charter amendment would add the following language to Section 12 of the City Charter:

"No person shall hold elective office while he or she has a spouse, domestic partner, parent, or child who is a current mayor or councilor."

If the proposed charter amendment is not adopted, it would remain allowable for a person to hold elective office on the same City Council with a spouse, domestic partner, parent, or child who is a current Mayor or City Councilor.

If the proposed charter amendment is adopted, a person would not be allowed to hold elective office on the same City Council with their spouse, domestic partner, parent, or child who is a current Mayor or City Councilor.

The referral follows a series City Council discussions held in open public meetings that began in fall 2023 and concluded in February 2024, regarding potential changes to the City's existing charter. Redmond most recently amended the City Charter in 2010.

Measure 9-169 City of Redmond

Ballot Title

9-169

Amending Charter to change Mayoral term length and term limits.

QUESTION: Shall the City Charter be amended to change the term for Mayor to four years and two consecutive terms?

SUMMARY: If adopted, this measure would amend Redmond City Charter, Section 9, Mayor. The amendment would change the term for Mayor from two years to four years, beginning with the Mayor's election in 2026; and create term limits of a maximum of two consecutive four-year terms as Mayor (for a total of eight consecutive years as mayor). Following two terms, a Mayor would be eligible to run for City Councilor or to run again for Mayor after a sitting out for a four-year term. Complete copies of the proposed Charter amendment showing all changes are available from the City Recorder's office and at www.redmondoregon.gov.

The referral follows a series City Council discussions held in open public meetings that began in fall 2023 and concluded in February 2024, regarding potential changes to the City's existing charter. Redmond most recently amended the City Charter in 2010.

Complete copies of the proposed charter amendment showing all changes are available from the City Recorder's office at 411 SW Ninth and at www.redmondoregon.gov.

(This information furnished by Keith Witcosky, City of Redmond.)

Explanatory Statement

The City of Redmond is proposing an amendment to the Redmond City Charter. For the elected office of Mayor, the amendment would change the term length from two years to four years, and establish term limits. The charter sets forth a government that is overseen by six City Councilors and one Mayor.

A charter serves as the foundational governance document of the City. It outlines the principles, structures, and processes of the City's government. Oregon law essentially allows city voters to organize their city government as the majority of voters consider best suited to meet the needs of the city. This proposed charter amendment would become operative January 1, 2026.

Currently, there are no limitations on the number of consecutive terms a person can be elected to serve as the Redmond City Mayor. If passed, a person would be eligible to be elected to two consecutive terms as Mayor. Following two terms, a person would be eligible to be elected to serve as a City Councilor or would be required to wait one term before being eligible to be elected for another term as Mayor.

Passage of this amendment would not be applicable to the upcoming mayoral term which runs from January 1, 2025, through December 31, 2026.

This Charter amendment would change the following language in Section 9 of the City Charter:

"At the biennial general election in 2024, a mayor shall be elected for a term of two years. Starting at the biennial general election in 2026, a mayor shall be elected for a term of four years. Starting at the biennial general election in 2026, the mayor shall be eligible to serve two consecutive elected terms. Following two consecutive terms, the mayor shall be ineligible to run for mayor in the following election. The ineligible mayor shall be eligible to run for councilor and shall be eligible to run for mayor in subsequent elections."

If the proposed charter amendment is not adopted, the mayoral term will continue to be two years and the City Charter would continue to have no limit on the number of consecutive terms a person can be elected to serve as mayor.

If the proposed charter amendment is adopted, the mayoral term would change to four years, beginning January 1, 2027, and a person would only be eligible to be elected to two consecutive terms as a Mayor.

Measure 9-170 City of Redmond

Ballot Title

9-170

Amending the City Charter to add Councilor term limits.

QUESTION: Shall the City Charter be amended to limit City Councilors to two consecutive terms?

SUMMARY: If adopted, this measure would amend Redmond City Charter, Section 8, Councilors. The amendment would create term limits of a maximum of two consecutive four-year terms as a City Councilor (a total of eight consecutive years as a Councilor). Following two terms, a City Councilor would be eligible to run for mayor in the next election or to run for City Councilor again in two years. Complete copies of the proposed charter amendment showing all changes are available from the City Recorder's office and at www.redmondoregon.gov.

Complete copies of the proposed charter amendment showing all changes are available from the City Recorder's office at 411 SW Ninth and at www.redmondoregon.gov.

(This information furnished by Keith Witcosky, City of Redmond.)

Explanatory Statement

The City of Redmond is proposing an amendment to the Redmond City Charter. The amendment would create term limits for the elected office of City Councilor. The charter sets forth a government that is overseen by six City Councilors and one Mayor.

A charter serves as the foundational governance document of the City. It outlines the principles, structures, and processes of the City's government. Oregon law essentially allows city voters to organize their city government as the majority of voters consider best suited to meet the needs of the city. This proposed charter amendment would become operative January 1, 2025.

Currently, there are no limitations on the number of consecutive terms a person can be elected to serve on Redmond City Council. If passed, a person would be eligible to be elected to two consecutive terms as a City Councilor. Following two terms, a person would be eligible to be elected to serve as mayor or would be required to wait one term before being eligible to be elected for another term as a City Councilor.

All current city councilors would be eligible for two consecutive terms following the passage of this amendment.

This Charter amendment would add the following language to Section 8 of the City Charter:

"Each councilor shall be eligible to serve two consecutive elected terms. After two consecutive terms as a councilor, a councilor shall be eligible to run for mayor and shall be eligible to run for councilor in subsequent elections. For councilors in office at the time this charter amendment is adopted, beginning with the election in the final year of the councilor's current term, the councilor shall be ineligible to run for councilor in the election following their second consecutive term thereafter."

If the proposed charter amendment is not adopted, the City Charter would continue to have no limit on the number of consecutive terms a person can be elected to serve on Redmond City Council.

If the proposed charter amendment is adopted, a person would only be eligible to be elected to two consecutive terms as a City Councilor.

The referral follows a series City Council discussions held in open public meetings that began in fall 2023 and concluded in February 2024, regarding potential changes to the City's existing charter. Redmond most recently amended the City Charter in 2010.

Ballot Title

7-87

BONDS TO INCREASE SAFETY; REPAIR AND UPDATE SCHOOLS

QUESTION: Shall District increase safety; repair, update schools and district facilities; leverage \$6,000,000 State grant; issue \$11,000,000 principal amount in bonds? If the Bonds are approved, they will be payable from taxes on property or property ownership that are not subject to the limits of Sections 11 and 11b, Article XI of the Oregon Constitution.

SUMMARY: Crook County School District will receive State matching funds of \$6,000,000 if bonds are approved. Bond funds are expected to finance following capital costs:

- Upgrades to heating systems including boilers and HVAC systems;
- Security improvements including secure entries, communication systems and monitoring;
- Replacement or restoration of roofing at school buildings and other district facilities;
- Capital improvements including site improvements, demolition, furnishings, equipment;
- Pay bond issuance costs.

Any remaining bond proceeds can be used to pay for any additional eligible capital projects. Bonds would mature in not to exceed 26 years from issuance and may be issued in series. The estimated increase in the tax rate is \$0.10 per \$1,000 of assessed property value. Actual levy rate may differ due to changes in interest rates and assessed value.

**Deschutes County
Commissioner, Position 2**



**Phil
Chang**
Nonpartisan

Occupation: Deschutes County Commissioner

Occupational Background: Forest and Watershed Management; Collaboration; Partnerships; Public Policy

Educational Background: Columbia University, BA; UC Berkeley, MS

Prior Governmental Experience: Federal Forest Restoration Program Lead, Oregon Department of Forestry; Central Oregon Field Representative, US Senator Jeff Merkley; Natural Resources Program Administrator, Central Oregon Intergovernmental Council

Stewarding Our Future

Deschutes County is growing and changing rapidly. I have the knowledge and experience to help our community navigate that change and keep this a great place to live, work, play, and raise a family.

Since 2021, I've built partnerships and driven real progress in housing, conservation, health services, and child care on the Deschutes County Board of Commissioners.

With your vote I can continue to:

- Improve housing availability and affordability,
- Preserve our quality of life and environment,
- Expand access to mental health and addiction treatment,
- Protect our homes from wildfire and keep insurance affordable,
- Provide reliable water for our farms, rivers and homes,
- Use your tax dollars wisely.

We support Phil:

Independent Party of Oregon
 Central Oregon Building and Construction Trades Council
 Oregon Nurses Association
 Oregon League of Conservation Voters
 JW Terry - Retired Command Master Chief, Veteran and Homeless Advocate
 Rob Rastovich, Century Farmer and Irrigation District Board Member
 Jim Porter, Chief of Police, City of Bend, Retired
 Mike and Sue Hollern
 Kathy Deggendorfer
 Preston Callicott

"Phil cares about sustainable land and water use and community members of all socioeconomic groups. He makes the effort to educate himself about issues in our county."

-Megan Kellner-Rode, Farmer

Jason Kropf, State Representative
 Melanie Kebler, Mayor of Bend
 Clifford Evelyn - Redmond City Councilor
 Andrea Blum, Sisters City Councilor
 Robin Adams, Director, La Pine Rural Fire Board
 Liz Goodrich, Redmond School Board, Vice-Chair
 Erica Skatvold, COCC Board

"Phil's background in natural resources makes him an excellent county leader who respects, understands, and listens to community members to protect our natural heritage."

- Michael O'Casey, Hunter & Wildlife Advocate

THOUGHTFUL - FISCALLY RESPONSIBLE - PRAGMATIC
www.votephilchang.com

(This information furnished by Phil Chang.)

The above information has not been verified for accuracy by the county.

**Deschutes County
Commissioner, Position 2**



**Brian
Huntamer**
Nonpartisan

Occupation: I am not employed at this time

Occupational Background: I have 30 or more years of experience in Real Estate brokerage and sales and 25 or more years in construction as a builder and carpenter in the Central Oregon

area; Drug and Alcohol counselor for the Bend treatment Center and Serenity Lane Bend

Educational Background: High School graduate Ramona High School, Ramona California 1969; Associates degree in Addiction Studies at COCC Bend Oregon 2015; Currently working on My Bachelor's degree in Families and Human Services at OSU Bend

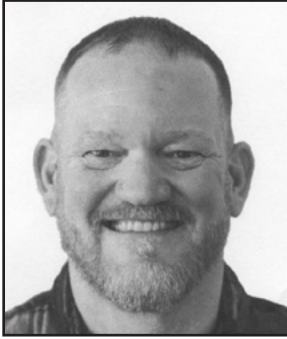
Prior Governmental Experience: I worked as a carpenter for R.S Bowers Construction, who was under contract with Native housing in the Aleutian Islands in Alaska 1980-1982

Deschutes County is one of the most beautiful and picturesque areas on the planet. When I came here in 1978 with my wife and two sons; which became three sons a year later, we felt it was the safest and friendliest places we have ever lived. One of my goals as a Deschutes County Commissioner is to help others experience that feeling, those who recently moved here and the long timers get it back again. Bend has grown so fast and probably will continue that way into the near future. There is going to be many challenges ahead. By having an open door and listening to the needs of my constituents and working closely with them and fellow county co-workers; we can meet those challenges. Thank You! Brian Huntamer

(This information furnished by Brian Huntamer.)

The above information has not been verified for accuracy by the county.

Deschutes County Commissioner, Position 2



Robert Clark Imhoff
Nonpartisan

Occupation: Residential and Commercial Shading Systems

Occupational Background: Subcontractor; Coach; Youth Pastor; Retail Manager

Educational Background: Glencoe High School – Diploma; PCC Rock Creek – Accounting/

Biology; NNC – Biology, Education, Business – BA

Prior Governmental Experience: None

I am deeply rooted in Deschutes County. My wife Laurie and I have embraced raising our children and grandchildren right here in Central Oregon. I have been a local business owner and coach for over twenty-three years, witnessing the strength of family, teamwork, and community.

I will focus on implementing tangible and measurable outcomes, coupled with accountability, seeking private rather than government-funded answers to our complex challenges. We need an effective commissioner who will roll up their sleeves, solve problems, and confront the issues in our county head on.

Our system for dealing with the homeless crisis in our community is broken. Engaging with and connecting them to available services is vital in helping these members of our community. Discouraging homeless "tourism" and free hand-outs without accountability creates a more permanent solution. Mental health and addiction issues go hand in hand with homelessness. I will advocate for state and federal grants and funding to address these issues. I have experience working with nonprofits and addiction services which will allow me to lead in this effort.

AS COUNTY COMMISSIONER I WILL:

Provide a new perspective to address our issues head on
Fund and Support Law Enforcement and Emergency Services
Advocate for all corners of our county
Invest in our natural resources to keep Central Oregon both beautiful and a desirable place to call home
Seek more local management and control of our resources
No tax increases for families and/or small businesses

ENDORSED BY

Deschutes County Farm Bureau
Oregon Family Farm Association PAC
Representative Vikki Breese-Iverson
Justin Perkey, PerkeyBuilt LLC
Michael Summers – Board Chair, Redmond School Board
Brett Davis
Michael Sipe

Learn more at:
ROBIMHOFF.com

(This information furnished by Robert Clark Imhoff.)

The above information has not been verified for accuracy by the county.

Deschutes County Commissioner, Position 2



Judy Trego
Nonpartisan

Occupation: Nonprofit Executive Director

Occupational Background: Public Service, Nonprofit Executive, Community Advocate

Educational Background: Arizona State University, Marketing Certification; Central Oregon Community College,

Studied Business and Marketing; Luke Center for Catalytic Leadership Certification; OSU Violence Prevention Certification

Prior Governmental Experience: Deschutes County Budget Committee; Chief of Staff for Oregon State Senator; Constituent Services Manager for U.S. Congressperson; Sisters City Councilor; Sisters Council President; Deschutes County Commission on Children and Families; Central Oregon Intergovernmental Council

Judy Trego has a proven track record serving in Deschutes County:

Community Advocate: Reducing the root causes of poverty in Central Oregon

Small Business Advocate: Assisting small businesses in rural Deschutes County, helping grow our local economy

Government Experience: Policy, administration, advocating action for individuals, children and families at the federal, state, county, and local levels

Judy's experience, heart, compassion, and temperament make her the most qualified candidate for Deschutes County Commissioner.

Areas of focus

Homelessness:

We must keep those on the brink of homelessness from becoming homeless through prevention programs, prioritize resources and move unsanctioned camping off county lands. It is inhumane for those living in this situation and untenable for neighboring property owners and detrimental to our environment. We need a variety of housing types and a research-based response to homelessness.

Mental Health:

We must add additional resources to address mental health and addiction for our communities. People are not getting the help they need when they need it most.

Community Engagement:

We have urgent matters that need immediate attention. I will listen to Deschutes County residents and prioritize our immediate needs and issues.

Collaboration:

I will collaborate with our cities and our unincorporated communities to assist and remove barriers through action, cooperation and partnership.

I am an action-oriented leader. I have the skills, qualifications and experience necessary to serve as your Deschutes County Commissioner and I am asking for your vote.

(This information furnished by Judy Trego.)

The above information has not been verified for accuracy by the county.

Deschutes County Elections: 2024 “I Voted” Sticker

The elementary school (K-5) sticker design contest concluded on December 31, 2023. 68 students from 6 elementary schools submitted entries. Thank you students from Buckingham Elementary, Highland Elementary, Lava Ridge Elementary, Pine Ridge Elementary, Sisters Elementary, and Vern Patrick Elementary schools for your wonderful designs.

Congratulations to Ivy Sapp, 2nd grader from Lava Ridge Elementary School. Ivy’s “I Voted” sticker is available to pick up at our office and city halls through Election Day.

Deschutes County Clerk’s Office invites local students to enter the **Deschutes County “I Voted” Sticker Contest**. Middle to high school (6-12) students are encouraged to design an “I Voted” sticker that will be used during the 2024 Presidential General election, and featured in our Voters’ Pamphlet.

Contest Details

The “I Voted” Sticker Contest Entry Form and the Design Template are available at the Clerk’s Office and for download on the Deschutes County Elections website: www.deschutescounty.gov/artcontest.

Middle to high school (6-12) students should mail or deliver their entries by June 30, 2024:

In-Person: Deschutes County Clerk’s Office, 1300 NW Wall Street, Ste 202, Bend

By Mail: Deschutes County Clerk’s Office, “I Voted” Sticker Contest, PO Box 6005, Bend, Oregon 97708

Email: artcontest@deschutescounty.gov

“I Voted” Sticker Design Contest Rules

- Circular “I Voted” sticker design (will be resized to fit a two inch (2”) diameter sticker)
- Hand rendered and digital designs accepted
 - Digital submissions should have a minimum resolution of 300 ppi
 - Hand rendered submissions should be drawn on white paper
- Designs should be nonpartisan and should not reference any political group
- Designs must include red, white, and blue colors at a minimum
- Designs must be original work and cannot use or reuse any imagery that is not theirs (no clip art or copyrighted imagery)