



ROAD DEPARTMENT

ADDENDUM NO. 1

SPRING RIVER RD PARKING IMPROVEMENT

The Bidding Documents for the Spring River Rd Parking Improvement project are amended as follows:

SPECIAL PROVISIONS

1.) Add the following subsection to Section 00225 of the Special Provisions:

00225.66 Portable Electrical Signs – Add the following:

Portable Changeable Message Signs shall be furnished two weeks prior to the start of onsite work and shall remain onsite through the duration of all onsite work.

2.) Add the following subsection to Section 00225 of the Special Provisions:

00225.90(b) Method “B” – Lump Sum Basis – Add the following after the paragraph that begins “Payment will be made...”:

As an exception to the above paragraph, payment for the following items will be made at the Contract unit price:

- Portable Changeable Message Signs according to 00225.96

BIDDING PLANS

Replace the sheets listed below bound within the Bidding Plans with the attached sheets:

- C4.1
- C4.2
- C4.3

Please note that these sheets have been revised to clarify sign work. As part of the Project work, the Contractor will perform the following sign work:

- Remove and Salvage:
 - 14 existing "PARALLEL PARKING ONLY" signs
 - 1 existing "PEDESTRIAN CROSSING" sign
- Reinstall Existing Sign Panel on New PSST Support and Footing:
 - 14 "PARALLEL PARKING ONLY" signs
- Furnish and Install New Sign Panel on New PSST Support and Footing:
 - 4 "PARALLEL PARKING ONLY" signs
 - 4 "NO PARKING – LOADING ZONE ONLY" signs

The Bidding Documents for the Spring River Rd Parking Improvement project are amended as described above.



Cody Smith, PE
County Engineer

4-29-19

Date

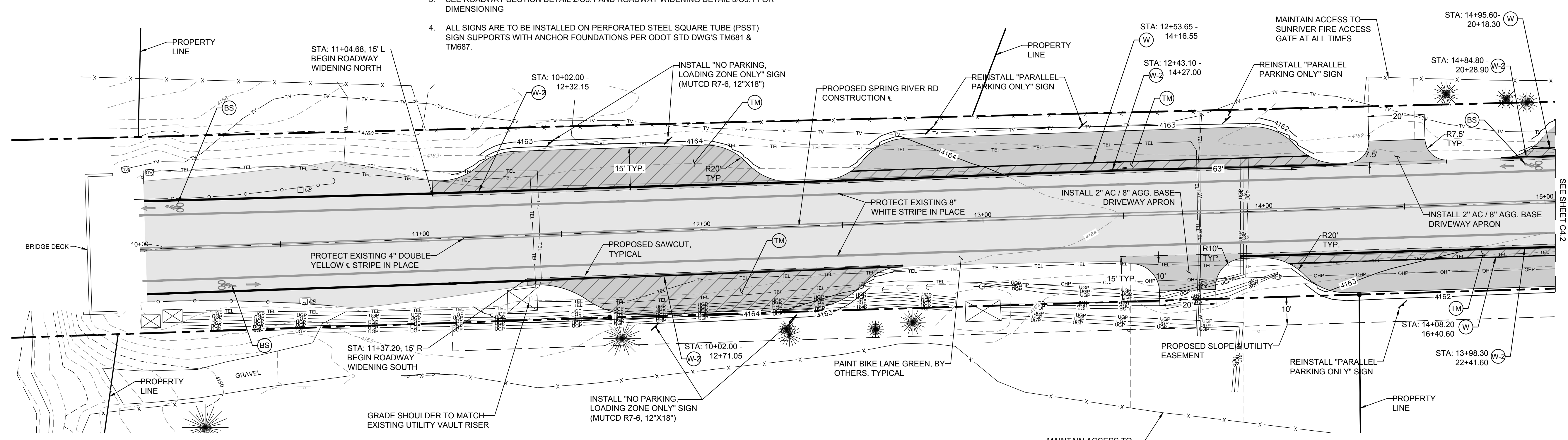
I acknowledge receipt of Addendum Number 1.

SIGNATURE OF BIDDER

Date

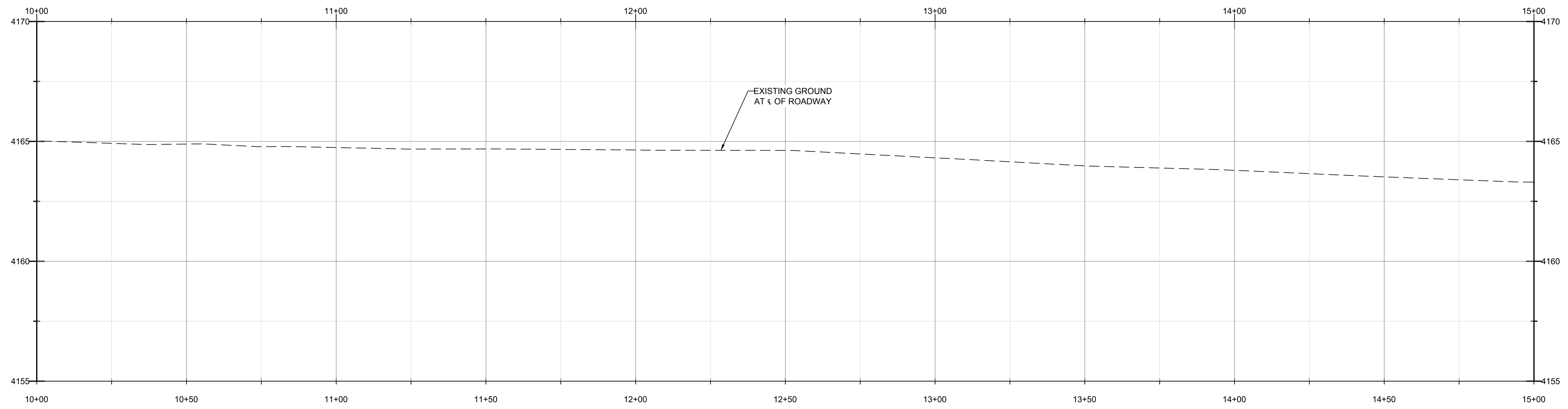
THIS ADDENDUM, COMPLETE WITH ATTACHMENTS, SHALL BE SUBMITTED WITH BID PROPOSAL.

- CONSTRUCTION NOTES:**
1. CONTRACTOR TO POTHOLE EXISTING UTILITIES TO VERIFY DEPTH AND LOCATION. CONTRACTOR TO CONTACT ENGINEER IF THERE ARE ANY DISCREPANCIES
 2. ALL STRIPING AND PAVEMENT MARKING TO BE PERFORMED BY OTHERS
 3. SEE ROADWAY SECTION DETAIL 2/C3.1 AND ROADWAY WIDENING DETAIL 3/C3.1 FOR DIMENSIONING
 4. ALL SIGNS ARE TO BE INSTALLED ON PERFORATED STEEL SQUARE TUBE (PSST) SIGN SUPPORTS WITH ANCHOR FOUNDATIONS PER ODOT STD DWG'S TM681 & TM687.



- STRIPING LEGEND (STRIPING BY OTHERS, TYP.)**
- (W) INSTALL 4" WHITE STRIPE PER ODOT STD DWG TM500
 - (W-2) INSTALL 8" WHITE STRIPE PER ODOT STD DWG TM500
 - (BS) INSTALL WHITE BIKE LANE STANDARD STENCIL PER ODOT STD DWG TM 503
 - (TM) INSTALL MODIFIED TRANSVERSE MARKINGS, 4" WHITE STRIPE'S AT A 36° ANGLE WITH 10' SPACING.

SPRING RIVER RD PLAN, STA 10+00 TO 15+00
SCALE: 1" = 20'



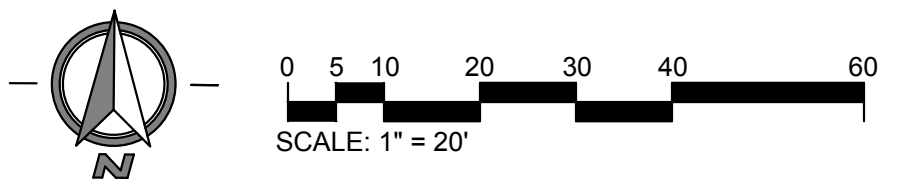
SPRING RIVER RD PROFILE, STA 10+00 TO 15+00
SCALE: HORIZONTAL 1" = 20' / VERTICAL 1" = 10'

COPYRIGHT 2019
HWA, Inc.
Any reproduction or use in any form without express written consent of HICKMAN, WILLIAMS & ASSOCIATES INC. is prohibited and subject to criminal prosecution.
ALL RIGHTS RESERVED



**SPRING RIVER ROAD
PARKING IMPROVEMENTS
PLAN & PROFILE
STA: 10+00 - 15+00**
DESCHUTES COUNTY

FOR CONTINUATION
SEE SHEET C4.2



REVISIONS	
1.	
2.	
3.	

DESIGNED BY: _____
DRAWN BY: DWL
CHECKED BY: MPD
SCALE: AS SHOWN
FILE: CD-180112-PP00.dwg

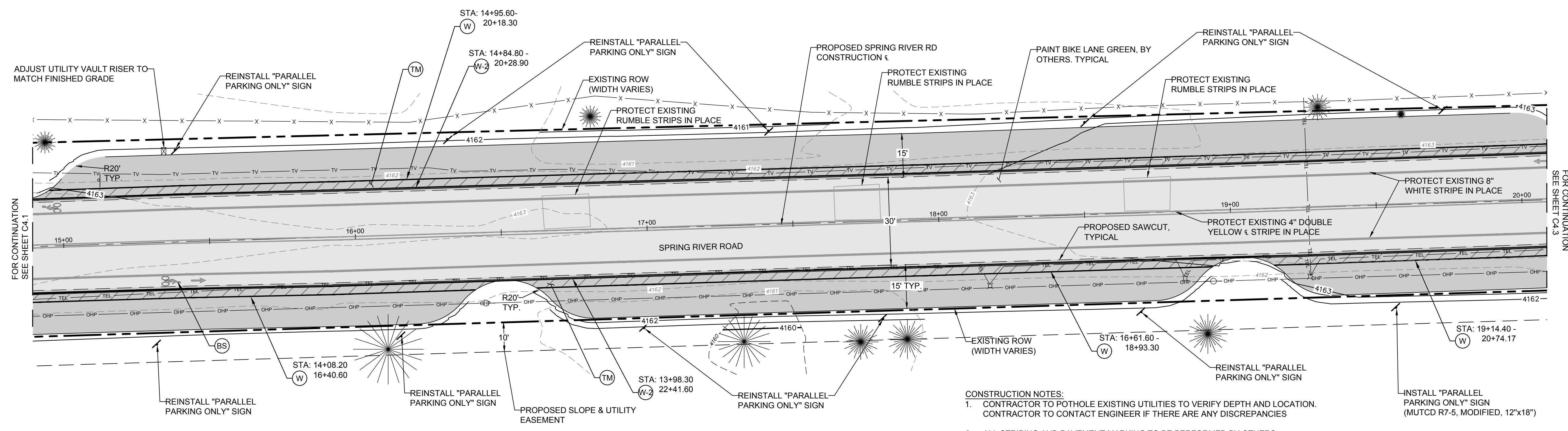
DATE:
04/18/2019

SHEET
C4.1

HWA# 180112

D:\S:\Land Projects\180112 Des Co - Spring River Rd\dwg\CD-180112-PP00.dwg Fri Apr 26 2019 - 9:10am

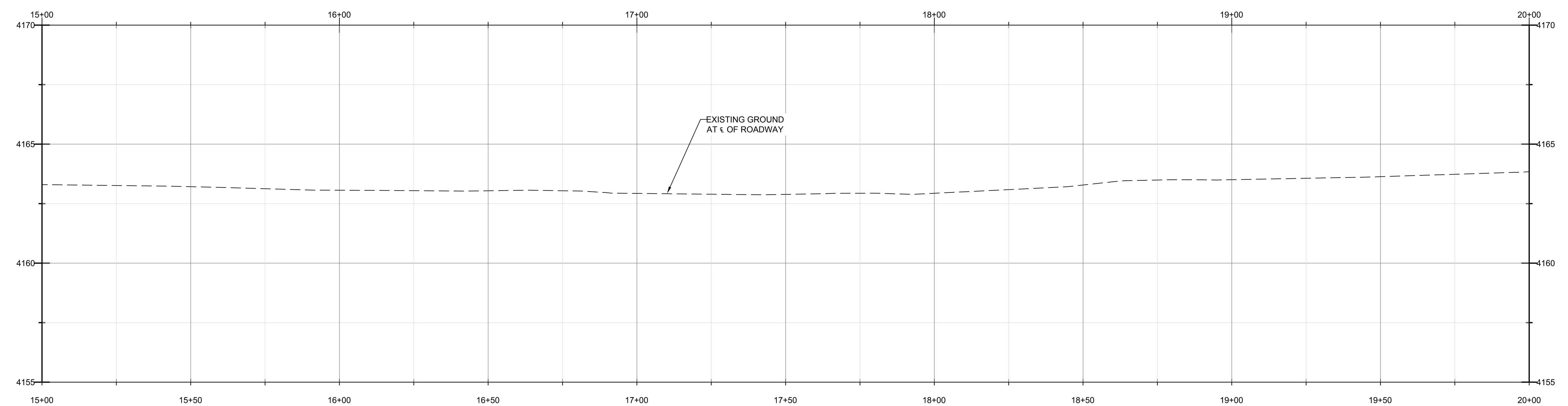
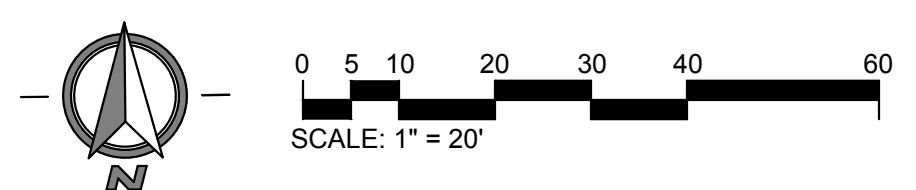
DanL S:\Land Projects\180112 Des Co - Spring River Rd\dwg\CD-180112-PP00.dwg Fri Apr 26, 2019 - 9:10am



- STRIPING LEGEND (STRIPING BY OTHERS, TYP.)**
- (W) INSTALL 4" WHITE STRIPE PER ODOT STD DWG TM500
 - (W-2) INSTALL 8" WHITE STRIPE PER ODOT STD DWG TM500
 - (BS) INSTALL WHITE BIKE LANE STANDARD STENCIL PER ODOT STD DWG TM 503
 - (TM) INSTALL MODIFIED TRANSVERSE MARKINGS. 4" WHITE STRIPE'S AT A 36° ANGLE WITH 10' SPACING.

SPRING RIVER RD PLAN, STA 15+00 TO 20+00
SCALE: 1" = 20'

- CONSTRUCTION NOTES:**
- CONTRACTOR TO POTHOLE EXISTING UTILITIES TO VERIFY DEPTH AND LOCATION. CONTRACTOR TO CONTACT ENGINEER IF THERE ARE ANY DISCREPANCIES
 - ALL STRIPING AND PAVEMENT MARKING TO BE PERFORMED BY OTHERS
 - SEE ROADWAY SECTION DETAIL 2/C3.1 AND ROADWAY WIDENING DETAIL 3/C3.1 FOR DIMENSIONING
 - ALL SIGNS ARE TO BE INSTALLED ON PERFORATED STEEL SQUARE TUBE (PSST) SIGN SUPPORTS WITH ANCHOR FOUNDATIONS PER ODOT STD DWG'S TM681 & TM687.



SPRING RIVER RD PROFILE, STA 15+00 TO 20+00
SCALE: HORIZONTAL 1" = 20' / VERTICAL 1" = 10'

COPYRIGHT 2019
HWA, Inc.
Any reproduction or use in any form without express written consent of HICKMAN, WILLIAMS & ASSOCIATES INC. is unlawful and subject to criminal prosecution.
ALL RIGHTS RESERVED



**SPRING RIVER ROAD
PARKING IMPROVEMENTS
PLAN & PROFILE
STA: 15+00 - 20+00**
DESCHUTES COUNTY



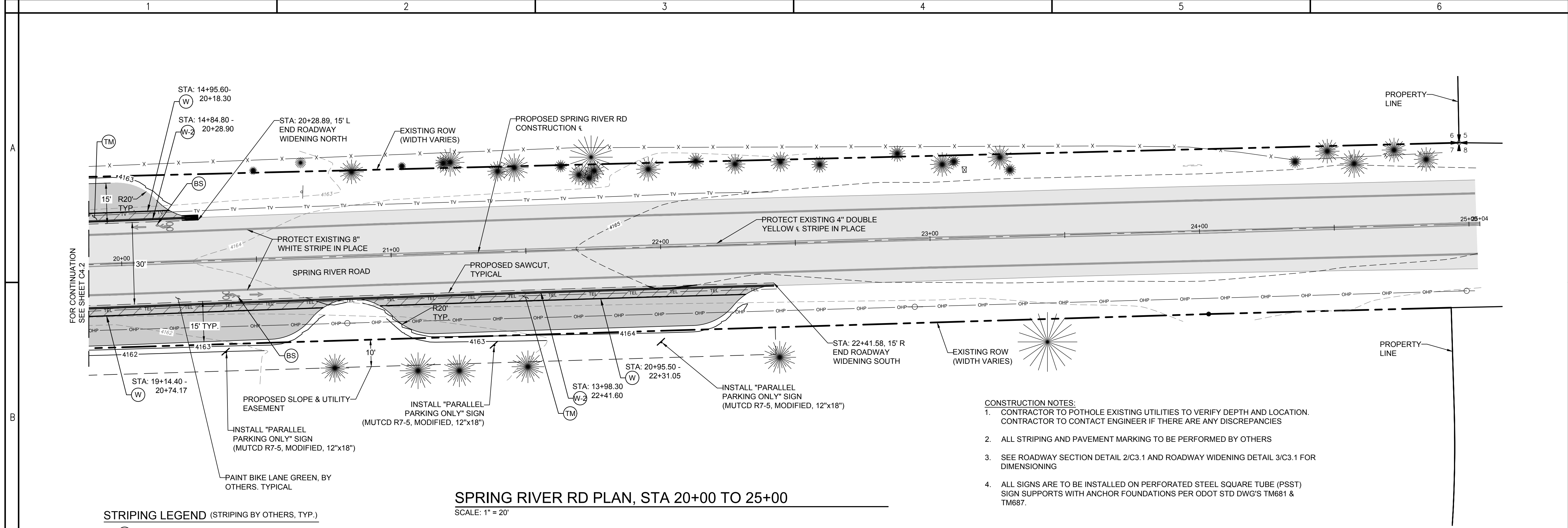
REVISIONS	
1.	
2.	
3.	

DESIGNED BY: _____
DRAWN BY: DWL
CHECKED BY: MPD
SCALE: AS SHOWN
FILE: CD-180112-PP00.dwg

DATE: 04/18/2019

SHEET
C4.2
HWA# 180112

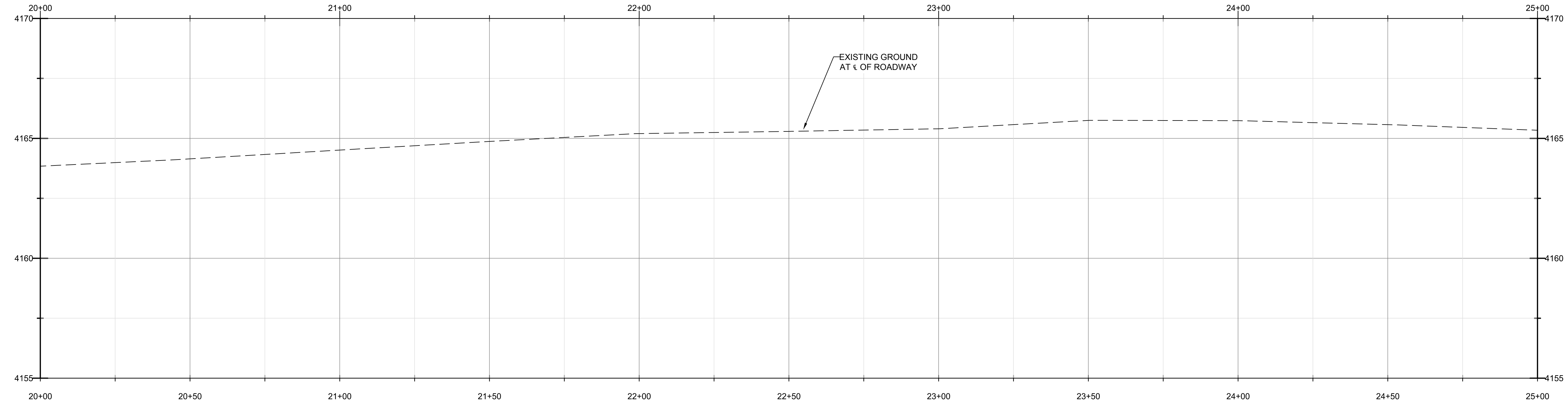
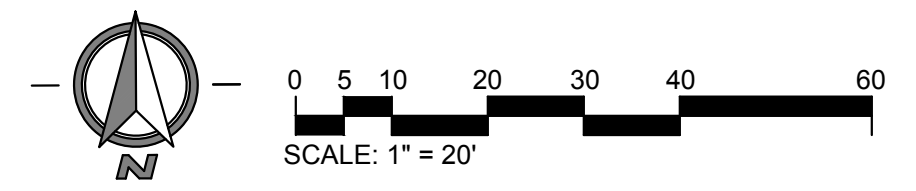
D:\s1\Land Projects\180112 Des Co - Spring River Rd\dwg\CD-180112-PP00.dwg Fri Apr 26, 2019 - 9:10am



SPRING RIVER RD PLAN, STA 20+00 TO 25+00
SCALE: 1" = 20'

- STRIPING LEGEND (STRIPING BY OTHERS, TYP.)**
- (W) INSTALL 4" WHITE STRIPE PER ODOT STD DWG TM500
 - (W-2) INSTALL 8" WHITE STRIPE PER ODOT STD DWG TM500
 - (BS) INSTALL WHITE BIKE LANE STANDARD STENCIL PER ODOT STD DWG TM 503
 - (TM) INSTALL MODIFIED TRANSVERSE MARKINGS. 4" WHITE STRIPE'S AT A 36° ANGLE WITH 10' SPACING.

- CONSTRUCTION NOTES:**
- CONTRACTOR TO POTHOLE EXISTING UTILITIES TO VERIFY DEPTH AND LOCATION. CONTRACTOR TO CONTACT ENGINEER IF THERE ARE ANY DISCREPANCIES
 - ALL STRIPING AND PAVEMENT MARKING TO BE PERFORMED BY OTHERS
 - SEE ROADWAY SECTION DETAIL 2/C3.1 AND ROADWAY WIDENING DETAIL 3/C3.1 FOR DIMENSIONING
 - ALL SIGNS ARE TO BE INSTALLED ON PERFORATED STEEL SQUARE TUBE (PSST) SIGN SUPPORTS WITH ANCHOR FOUNDATIONS PER ODOT STD DWG'S TM681 & TM687.



SPRING RIVER RD PROFILE, STA 20+00 TO 25+00
SCALE: HORIZONTAL 1" = 20' / VERTICAL 1" = 10'

COPYRIGHT 2019
HWA, Inc.
Any reproduction or use in any form without express written consent of HICKMAN, WILLIAMS & ASSOCIATES INC. is unlawful and subject to criminal prosecution.
ALL RIGHTS RESERVED



**SPRING RIVER ROAD
PARKING IMPROVEMENTS**
PLAN & PROFILE
STA: 20+00 - 25+00
DESCHUTES COUNTY



REVISIONS	
1.	
2.	
3.	

DESIGNED BY: _____
DRAWN BY: DWL
CHECKED BY: MPD
SCALE: AS SHOWN
FILE: CD-180112-PP00.dwg

DATE: 04/18/2019

SHEET
C4.3
HWA# 180112